



Newsletter—Issue # 1—April 2004

Welcome to the first edition of this newsletter 😊

1. Book reviews
2. Your story
3. Re-shape your body with Feng Shui
4. The Feng Shui Network conference in Canberra
5. Feng Shui and Magic Carpets by Steven Guth
6. Dowsing the Spirit of the Place by Alanna Moore
7. Destiny square of Lady Diana by Darryl Butler
8. Classifieds: You de-clutter, I de-clutter
9. In the next issue

Please submit your article, comments or contribution to roselinedeleu@hotmail.com before 1 June 2004 to prepare the next issue. Thank you.

Roseline Deleu

BOOK REVIEWS

“Dowsing Manual”

by Harald W. Tietze

This is the ideal ‘easy to read and to follow’ paperback manual. A well-priced book full on information for the beginner and more advanced dowser.

This book is also available as E-book with colour pictures.

RRP \$15.00 for the printed edition

Order www.happyology.com

“Your Easy First Steps to Feng Shui”

by Roseline Deleu

Buy this book for first for yourself... and you will quickly be inclined to buy additional copies as it is a great present for birthday, Mother’s day or any other occasion. This book is filled with many true stories and everyday examples that will encourage and inspire every reader.

RRP \$15.00 for the printed edition

RRP \$12.00 for the E-book (read-on CD .pdf file)

Order on this website see “Books & CD’s”

Your story

This is your space!

Write and share your story with the rest of the world. Don’t be shy and email me NOW. Try to illustrate it with a photo if possible.

May 2004 

reprint of the Easy Feng Shui Magazine – Decorating Guide

Keep an eye open at any news agency.

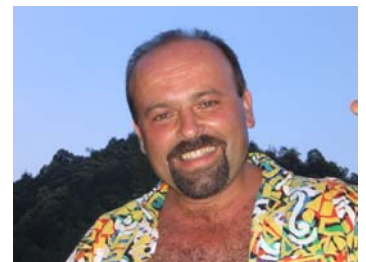
Re-shape your body

Applying just a few basic Feng Shui principles around the house can aid in improving health. Feng Shui is the Chinese art of placement that helps the circulation of the energy, called Chi, around your home. As your home symbolizes your physical body, releasing the energies around you will help with a better Chi flow within.

Roseline Deleu teaches Feng Shui, during her classes she has seen some tremendous changes in her students’ lives. For example, last year, Larry followed her Feng Shui advice and by the end of the course he looked younger and had lost weight just by de-cluttering and rearranging his furniture.

Roseline recommends getting rid of things you have not been using for the last year to free yourself, breathe better and to feel lighter.

Article published in ‘the Chronicle’ Tuesday 10 February 2004



Getting rid of clutter will not only bring a smile on your face, but you will see some kilos disappear after a big clean out!

The Feng Shui Network Conference in Canberra



Roseline Deleu

Thank you to everyone who attended the conference on Sunday 21 March 2004. As with every year there was great ambience, wonderful attendance, affordable stalls and a free draw with great prizes. Each of the presenters shared wonderful and varied topics on Feng Shui

Having such a variety of subjects provided insight to Feng Shui and the connections it has in many different parts of the whole huge puzzle that could be called 'life path', or 'tao'.

During the day we covered all levels, basics to advanced including :

- Understanding the 5 elements by Roseline Deleu,
- Miracle healing with Harald W. Tietze;
- Harmony with Feng Shui and Interior Design by Sue Tabrett
- Feng Shui and your body with Margo Rankin;
- The magic square of destiny by Darryl Butler
- The predictions of period 8 with Jodi Brunner
- The approach of Feng Shui and its link with the aboriginal culture by Steven Guth
- Discovering the spirit of the place with Alanna Moore.

The conference also hosted a very special event. Roseline's first book was launched by her guest H.E. Mr Luk Darras, Ambassador of Belgium. The Ambassador made a great impression on the public sharing of his 'geomancy' stories and other esoteric views.

A couple of days before the event, Roseline received only 50 books for the launch and was amazed to see her first book selling so fast. While she was signing them, John, her partner, sold all the books before the end of the lunch break and also took orders for the next lot of copies which are now available.



**All this is very exciting,
Roseline!**

Will there be another conference next year in Canberra? Yes most probably. To decide about its possible new look, send your ideas, comments, feed-back to roselinedeleu@hotmail.com

Thank you very much,

Roseline Deleu

Dowsing the Spirit of Place

© Alanna Moore

In my work as a geomancer I assess the invisible hazards in the environment that can influence our wellbeing for better or worse. Looking at the overall 'feng shui' of a home or building site can involve checking out a lot more than the Chinese geomancers of old could have dreamed of. And being in Australia means addressing the haunted aspects of our landscape, so that people can avoid building on desecrated Aboriginal sites. It can be a bit of a let down to clients when they are told 'you can't build just there!' But, in understanding the risks involved they are usually very grateful!

In times long past people sought out sites where Earth energies were most concentrated - in springs, caves, rocky outcrops, mountain tops etc. Some became the sacred sites, which, if approached properly with reverence and ritual, could inspire prophesy or enhance healing, fertility or initiation. The intense energetic atmosphere of a site is a blend of the life force (ch'i) and consciousness of the Earth, humans and nature spirits (aka devas), with cosmic connections too.

As a dowser I've learned about the importance of all of these factors in the landscape, and lately, having had many travels around Australia and New Zealand in the last few years, I've been meeting some very interesting nature spirits. (I'm fortunate in that my partner Billy can actually see them.)

Myth, or just another dimension?

We know that ancient cultures tended to anthropomorphise the landscape, that Aboriginal lore sees the land inhabited with often huge spirit beings, in human and animal form. It never seems to occur to the average person that these beings are actually really out there, inhabiting the land, except where their sites may have been destroyed.

There are various 'species' of deva, with the 'Wandjina' and rainbow serpents being fairly common in Australia. Lizard or crocodile headed/human torsoed beings are found in Australia and New Zealand, where the 'tanifwha' is a well known guardian spirit, given due respect by the Maori.

When a highway re-alignment threatened the riverside home of a tanifwha in New Zealand last November, works were stopped until the local Maori tribe and Transit NZ could come to some agreement, to keep the tanifwha happy. I hope it still has its home intact, because I know that tanifwhas like to move around their territory. Some people say that the bunyip is the equivalent (water) spirit in Australia.

What do you do with a wounded dragon?

Of course the Chinese have been warning us for millenia about disturbing 'Earth dragons', by mining, the building of rail and roads, blocking of wells etc. The consequences can be disastrous, they said, and dowsers find that disturbed dragon lines can spread tainted energies far and wide through the Earth energy network. Whole areas might thus be rendered unpleasant to live in.

Earth acupuncture is often used by geomancers to harmonise Earth ch'i. This can be in the form of standing stones or 'Towers of Power'. These installations can transform the energetic character of a place and also attract nature spirits. They can help create a sacred site in one's own back yard.



Healing the Land

Australian landscapes have been particularly traumatized by the ignorant destruction of its sacred sites (while in Europe colonising forces kept the sites for re-consecration to new gods). This has cast many shadows of sadness across the land. Sites of massacres are probably the most hideous legacy that landscapes bear, and they are numerous everywhere.

Saying "sorry" to the land itself is needed in many areas. Earth healing work is best done with as much public participation as possible, suggests Slovenian geomancer, author and artist, Marko Pogacnik. He is engaged by local authorities in his own country to revive energetic centres, using Earth acupuncture (carved standing stones), and ritual singing, meditation and visualisation techniques. Pogacnik's books are highly recommended (they are published by Findhorn Press).

Alanna Moore

Future geomancy

I have a dream of a future time in Australia when local council geomancers will be consulted before major developments are allowed. They would be concerned with maintaining the energetic harmony of a community, by the preservation of its mythic sites and places of power, and by their designation of the unhealthy places to avoid.

The latter is actively encouraged in places like Switzerland, where local council subsidies exist to employ a dowser's services before moving or building. By helping the community avoid zones of geopathic stress discomfort and disease may be avoided, so in their wisdom they must see this as good prophylactic medicine.

Resources for geomancy

To find out more about Australasian geomancy check out the free Geomantica magazine, only available on-line at Alanna's website: www.geomantica.com

About the author

Alanna Moore has over 20 years experience with geomancy in Australasia, is the author of four books, runs geomancy courses and is currently making video films on these subjects. She was a keynote presenter at the International Dowsers Congress held in Manchester UK in September 2003 and lives in central Victoria, Australia.

Feng Shui and Magic Carpets.

by Steven Guth

In my lecture at the 2004 Feng Shui conference I suggested that Feng Shui practice is becoming too intellectual and so losing touch with new ideas and basic issues.

To counter this trend I like to present a new Feng Shui adjustment technique that is in none of the Feng Shui literature but is as old the practice of Feng Shui. Its Oriental too, but from the Persian rather than the Chinese world.

Please bare with me while I unravel the mystery.

Good hand knotted oriental carpets resonate with the energy patterns of our planet. They are made by people who over 2,000 or more years have refined and devised patterns that contain a whole palette of energies that can be used for Feng Shui adjustments.



This is the carpet I bought \$250. The design puzzled me until I worked out that I needed to dilate my eyes so as to bring the 2 rows of dots on top of each other.

The better carpets are made by master weavers who cast spells into the carpets as they weave their way through traditional patterns. Consider that an average carpet of about one by two meters (a good size) contains about 0000 double knots, each knot holding the thought of the weaver in place as it is firmed up and locked in place between the warp and the weft. A carpet of that size and quality takes about 150 days of focused, concentrated attention to make.

An Oriental carpet of two square meters costs upwards of A\$200. I recently bought the one in the illustration from "Silkways" in Canberra for A\$250. I been to Caddy's travelling sale when it was in Canberra and saw, or should I say experienced, some powerful carpets with prices to match. One, in silk for \$26,000 was magical. At the sale I asked the various sales people about the Feng Shui magic in carpets and only the big boss from Sydney had "the eye to see and the nose understand". He knew about the magic in some carpets and suggested to me that the magical ones where quickly sorted out from the stacks of new arrivals and were sold into private collections at very satisfactory (for Caddy's) prices.

One aspect of carpets that needs to be borne in mind is that good carpets appreciate like any other art work. A \$26,000 carpet sold at auction in 10 years time would be price adjusted for inflation and its increasing scarcity value - sadly a very real factor as political chaos and dislocation rips through the Oriental world... Just don't pay too much to at the start!

Substances that hold and radiate Feng Shui energy.

I've often been puzzled why people pay good money to buy acrylic representations of frogs, Buddhas or goldfish in the expectation that these will bring good Chi into a room. Acrylic loses chi quickly and needs to be recharged with thoughts or prayer on a daily basis.

Silver is one of the best substances for holding chi energy. It is easy to impregnate with a spell or a blessing, which is why it was used for blessed religious medals (the modern ones in aluminum are useless). Gold is hard to impregnate. Bronze, particularly if gold plated works well, which is why it is used for the images in temples. Wood is OK, hardwoods keep energy patterns for longer. Shape is also important, generally round shapes with some point of focus hold chi energy well.

Wool, as its used in carpets holds its energy remarkably well. Have you ever had a second hand wool jumper given to you that even after repeated washing and sunning felt uncomfortable? Undoubtedly it retained the chi forces of an unfortunate previous owner. I suspect that wool carpets held in place by their tight warp and weft structure keep their energy for centuries - as do oil paintings or religious images painted with tempura and gold.

How to dilate your focus?

It's just the reverse of crossing your eyes. It's a bit difficult to do at first, expect strange sights and eye movements and it can even get painful. Try in short bursts. One way of getting started is to at a bright landscape and then raise a finger into your field of vision - but keep looking into the distance - your blurry unfocussed finger will appear to have a twin next to it! Keep at it, it took me weeks to get dilation to become a controlled and reliable muscle response.

The shock of first success will also tend to put you off. Wow, look at that leaping out of the carpet, how is that possible? The layered photo of the carpet gives some indication of what your eyes can do. But with your eyes, rather than the computer doing the work, you don't get stability, everything is in constant movement, which is both exciting (wow, the carpet is alive!) and frighteningly off putting.

The carpet in the illustration got me started on dilation. The design seemed to make little sense. It is a mandala carpet but it simply doesn't come together or work ... and surely those oblong balls in the centre field (which look like opium poppy heads) need to be matched up. So I tried matching them up and found that at the very centre I got a shifting row of three flowers (or are they stars?) with 2 sets of two on either side. 3 plus 4 equals seven the Sufi number for the manifestation of the cosmic god.

Look again, at the overlapping illustration. Just above and below the central space you will see the geometric representation of some sort of winged creature. This, I suspect, from watching it move while I dilate my focus is the representation of the guardian spirit that gives the opium user access to the central ongoing manifestation of the seven aspects of the creative god.

Undoubtedly there is also far more in this little carpet that I've yet to find. I have the carpet in my living room, where I can cast my eyes over it while talking to the stream of visitors that are a part of my current life. When the conversation gets boring I let my eyes play over the carpet hoping to find more in the fleeting images that focus dilation brings to good carpets. I expect that my simple little carpet will give me years of entertainment and present me with further esoteric insights to the Sufi world view.

How to tell a good carpet from a bad or mediocre one?

I have found a good simple way to make an initial separation. I am not sure why it works but it does. It takes a little practice but it's quick, simple and free. The trick? Dilate the eyes, unfocus them and as if you were trying to make sense of a 3D image. First look at something bright, then turn to the carpet, dilate the eyes and keep shifting your double focal point until something pops up. In a good carpet a vista with depth will appear, the design appearing embossed on the carpet.



This is the overhead picture of the carpet that made little sense until I learnt to dilate my eyes. The funny oblong circles—which look a bit like opium poppy pods seem to hang meaninglessly in space.

Now if you keep playing and looking you may discover that the pattern once overlapped (like in the adjusted photograph) actually hides a third pattern, perhaps an image of a god (a no no in the Islamic world), or mandalas that can lead one to fascinating fairy tale worlds or perhaps (and I'm still looking for it) the magic symbol that will enable one to travel through time and space.

There are carpets that protect your space, carpets that balance the energy fields around your body, carpets that contain hidden images of strange gods, carpets that balance Yin and Yang, carpets with mandalas that tune you into spiritual realms, carpets that denote drug experiences (both hashish and opium are well known in the oriental world), carpets that create gardens in your living space, carpets that tell of tribal territory, carpets that speak of family, carpets that make you spin in creative dance, carpets that fill areas with effervescent force, carpets that bless and even carpets that tell of political events.

In my description I've created a catalogue of types. In reality most carpets contain more than one element. In this article I'll focus on energy creative carpets. These are usually medallion carpets - carpets with a single large central pattern held in place with a border.



First the border. Borders are an almost universal feature of Oriental carpets. They protect the interior space from intrusion by djinns or elemental forces (which can also be carried into a carpet's central world by the viewer's eyes). Perhaps the simplest form can be seen in a continuous interlocking pattern with, at a minimum, a thin string running from one design to the next. This like the Buddha knot incorporated into some hanging Feng Shui charms is intended to keep a psychic bug circulating until it gets bored and leaves.

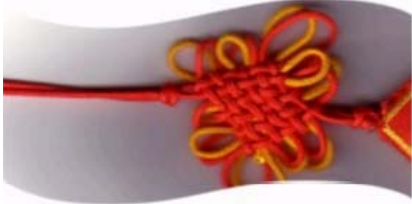
This newsletter continues next page...



Newsletter—Issue # 1—April 2004 (continued)

Feng Shui and Magic Carpets.

by Steven Guth (continued)



The idea of a Buddha knot, like a carpet's boarder, is to protect. Bad influences are trapped into running around the knot.

When entering the protected magical centre of your carpet don't step on the boarder or you will weaken yourself. Remember the children's game of walking on the squares and avoiding the lines in a footpath?

Of course its always best to walk on your carpet in socks or bare feet - even if its only in respect to the people who spent months weaving your carpet. There is another reason too. Good carpets are made from natural herbal dyes which in the homoeopathic quantities we absorb through our feet (or even in our breathing) can influence our mood like Bach flower remedies. Which is why protective carpets are often dyed a deep red - but that's another story, another article.

Other boarder motives are walls, scorpions, footprints left by protective beings, dragons, rams horns and so on.

Inside the protective boarder is space where the magic takes place. At the very centre of a medallion carpet is the point of balance from which whooshes the creative force of the universe. To help understand this, think of the mandalas as the eye of a whirly wind that is about to spring into existence at every and any moment. The remaining images within the boarder lay out the way the creative energy moves outwards into the surrounding space.

Those familiar with the lapan school of Feng Shui will see similarities between the lapan and the mandala carpet. The lapan takes the here and now as the centre and then builds up and places successive influences into concentric circles around the central here and now - which is assumed to be under magnetic influence. The medallion carpet creates, rather than studies the situation.



Medaillon carpet suitable for helping energy inflow into a space



The lapan asks one to judge things outwards from the inner centre which I assumed to be under magnet influence. Medaillon carpets let out the energy from the centre.

There are swirls around some mandalas, know as arabesques induce one to dance. I suspect that mandala carpets draw their inspiration from Sufi whirling dervish dances. In these the central dancer raises his hand to heaven and with the other hand spreads his energetic harvest into the surrounding environment. While this is happening other dancers circling around create a contra rotating energy wave that brings the energy harvest into the here and now. When properly executed the dervish dance breaks the time barriers which we hold in our mind and so let the past slip into the future. Once I managed a Sufi dance on the carpet in the picture, in which - with the help of some friends - I experienced a feeling of open timelessness.

Positioning and enspelling your magic carpet.

A good mandala carpet can create an energy outlet in virtually any situation. This, in part explains the popularity of oriental carpets as European cities grew and people started to live in 4 and 5 story brick apartments with wooden floors.

Houses and apartments used to have larger entry hallways than seems the fashion these days. I think this was because people recognised that entry ways usefulness in regulating the energy flows that entered the house.

As such, the entry hallway is the place for a protective carpet rather than an energy raising mandala carpet.

In modern buildings with cement floors bare in mind that the steel reinforcing rods encased within the cement over time become increasing source of magnet field. Keep this in mind when aligning your carpet.

Additionally, energy from dowsing lines or other underground sources plays an important part in much of Australia. This is particularly true in Sydney and Canberra where complex geological strata create all sorts of interesting effects. This tends to be overlooked by some Feng Shui practitioners who follow the Chinese Feng Shui traditions.

If you have a dowsing line - even a bad one - running through your house try to place the centre of your medallion over the line. Some places have a rising energy vortex - remember that reinforced cement floors tend to dissipate them, while wooden floors allow vortexes free entry. Vortexes are the ideal place for a mandala carpet .

Steven is offering you the opportunity of a workshop on this unusual subject.
Please email to roselinedeleu@hotmail.com to express your interest.

Destiny Square numerology : Lady Diana

by Darryl Butler

Those of you who attended the recent Feng Shui conference may be wondering about Lady Diana's numerological Destiny Square reading. Darryl Butler of destinysquares.com has submitted the following information, created from Diana's birthdate.

He writes:

Birth Numbers: Diana was indeed born on 1.7.1961 (thanks to those who pointed this out). Her Destiny number, through digital compression (otherwise known as reduction), is: $1+7+1+9+6+1$ which adds up to 25, and can be further reduced by adding the 2+5 to equal 7.

A	Month	B	Date	C	Year	D	Destiny
Birth month eg. Dec is 12	7	Birth day date eg. 7	1	Year (last 2 digits) eg. 68	61	Fully reduced number eg. 7	7
E	C-2	F	D+2	G	A-2	H	B+2
59 14	5		9		5		3
I	D+1	J	C+1	K	B-1	L	A-1
	8	62	8		0		6
M	B+1	N	A-3	O	D+3	P	C-1
	2		4	10	1	60	6

Destiny Number (7) : According to this system of numerology, Diana's chart shows a Destiny Number of 7, someone who is destined to lead a life of curiosity, analysis and wisdom. The number 7 is often referred to as 'seeking answers', not accepting things on face value, always delving into life's great mysteries, unafraid to ask the bigger questions. When in balance, 7's love to study and to teach. It's considered a scholarly number, philosophical in nature, and is associated with mystical and religious aspects. 7 is considered an 'unusual' number and 7's are often unusual people who display a great deal of individuality, and can be seen as quirky or mysterious. 7's take great pride in living up to their beliefs, and in respecting the beliefs of others.

Energy and Enthusiasm (5) : Diana's chart shows a 5, and 5 is the number of change and variety, the number of the adventurer. When in balance, 5's can be very energetic, bold and daring risk-takers. They can juggle many things, preferring breadth of experience and spontaneity. A 5 in this position shows a person with a lot of energy to contribute in a wide variety of areas and in a wide variety of ways. When out of balance, the energy of 5 can be scattered or spread thinly across too many areas, which can drain energy and enthusiasm. A 5 in this position also signifies energy reserves to bring about change.

Family and Friends (9) : Diana's chart shows a 9, and 9 is known as 'the number of humanity'. It is also the number representing completion or wholeness. A 9 in this position signifies that Diana may have considered the whole of humanity as one potential group of family and friends, and suggests an attitude free of prejudice toward differences across cultures and belief systems. It also shows a need for wholeness within the family. Along with 8, 9 is also a political number, the interests of the 'greater family', and she lived a family life fused with politics.

Generosity (5) : Diana's chart shows a 5 in this position, showing generosity in a wide variety of ways. 5's can be very quick to act and are usually the first to show their generosity, whether with regard to time, money, labour, or their own self-expression. 5's can sometimes forget their own needs while being generous toward everybody else.

Humanitarianism (3) : Diana's chart shows a 3, the number of self-expression, and the joy of life. Self-expression usually occurs in the form of verbal communication, and suggests the importance of communication skills toward humanity, of making a difference by what she could speak of herself. It also shows that she could bring joy to humanity just by being herself. A 3 also signifies the area most likely to be joyful, in Diana's case with the greater humanity and within humanitarian causes. 3 is also a more casual number and suggests comfort toward humanity. 3's usually make great hosts and love to organise situations which bring people together.

Intuition (8) : Diana's chart shows an 8 in this position, and 8 is the number of 'abundance and manifestation'. Along with the number 2, 8 is said to be an intuitive number. 8 is the number of power and strength, of goals and achievements, and shows that Diana's intuition was most likely to come in the form of how to achieve things of great endeavour. When in balance, 8 is the number of believing in the ability to achieve that which you desire, to manifest it at will. 8 is also associated with politics and suggests strong intuition regarding such affairs. Since 8 is about manifestation, it is also about change, in this position it shows intuition with the power to go against the status quo.

Joy (8) : Diana's chart shows an 8 in this position as well, signifying that what may have made her happiest was feeling the power within to achieve or manifest the things she really desired. 8 is the number of large scale endeavours, and the number of money (as an energy form), and this position shows enjoyment in being able to 'make a difference', particularly to areas wherever there is 'lack' (opposite of abundance). 8's often have deep faith that whatever is necessary will come to fruition. Once again, the 8 signifies change, and in this position, a sense of fulfilment.

Karma (0) : Diana's chart shows a 0 (zero) signifying a neutral energy, having no particular karmic energies to be resolved. Zero is often considered the number of pure potentiality and usually signifies great mystery and power.

Love (6) : Diana's chart shows a 6 in this position, and 6 is the number of family, the home, close friends and small groups. It is the number of harmony, care and nurturing, and shows a person who would be happiest in relationship where the nurturing of loved ones and children was valued above all else, and a need for domestic harmony. It also shows a person who is able to put their loved ones before themselves. A 6 in this position can also signify family influence within our closest personal/intimate love relationships.

Money (2) : Diana's chart shows a 2 in this position, and 2 is the number of balance, and of relationships. 2 relates to things like sharing, cooperation, communication, it is also about sharing and exercising good judgement. 2 in this position usually indicates a very sharing attitude toward money, the ability to make money in 'partnerships' and to use money in a cooperative and supportive way. 2 is said to be very considerate and is often referred to as the most intuitive number, suggesting guidance via intuition rather than solely based on logic.

Nurturing (4) : Diana's chart shows a 4 in this position, and 4 is the number of stability. It is also the number of structure, logic, order, foundations, goals, plans, steady growth and patience. When out of balance 4 can venture into areas opposite these qualities. Generally, it shows a person who will work steadily to nurture their own needs and the needs of others, not only practical care but also nurturing of ideas and values. 4 is a very practical number and suggests a patient, dependable ability to nurture.

Opportunity (1) : Diana's chart shows a 1, the number of individuality and independence. 1's generally don't need much help from other people, and in this position shows that Diana will have made her own opportunities. It is the number of initiation and of focus, suggesting an ability to instigated and set opportunity into motion. 1's can see opportunity very clearly, often do 'one thing at a time' before moving onto the next. It also shows a person who may need their own space to make the most of opportunities.

Philosophy (6) : Diana's chart shows a 6 once again, the number of family, the home, close friends and small groups. This suggests an attitude toward life of the importance of care and protection of your family and close friends and the need to have a harmonised home/domestic life. It shows a naturally gentle, responsible nature with a desire for harmony and peace.

The Destiny Square system of numerology has been uniquely created by Darryl, adapted from ancient Indian Yantra Squares. Darryl provides personal readings, as well as workshops for learning to read the Destiny Squares of yourself and others. Call Darryl on 0403 793 422 or visit his website for further information: www.destinysquares.com

Classifieds

You de-clutter...

I would like to find a pre-loved surfboard suitable for a beginner 12 y.o. If you have one of those sleeping in your garage, let me know! Send me an email to roselinedeleu@hotmail.com

I 'de-clutter...'

BOATS FOR SALE



'Minou III' 4.65 m Dyvinacel sandwich fiberglass Fishing punt with central console with pod and transom step. Custom build in 2003. New 30 HP Yamaha 4 stroke still under warranty! New McKay drive-on trailer with spare wheel and 55 lb Minicota electric motor with automatic pilot bow mounted. 2 batteries, casting platform with swivel seats, ss. grab rails, bollards, 4 rod holders + 6 rod racks. Dual beam sounder. Very stable, fast, economical boat for lake, river or sea.

Good super slow troll or tournament fishing

\$ 12,000

Call John 0409 488 553 or (02)6260 35 99

or send an email to roselinedeleu@hotmail.com



'Faronika' 5.60 m Dyvinacel sandwich fiberglass Fishing Boat. Cabin cruiser hard top. Cruise 28 MPH max. with as new 60 HP Mercury 4 stroke still under warranty! 75 liters under floor fuel tank. Self draining cockpit with deck wash, fish cleaning table, bait tank, insulated fish box, safety gear, 27 MHz radio, 71 Laurence sounder, 2 anchors, galvanized drive-on trailer with o/r brakes.

Very economical boat perfect for estuaries or ocean. Super stable at rest comfortable cabin sleeps 2 or 3.

\$ 22,000

Call John 0409 488 553 or (02) 6260 35 99

or send an email to roselinedeleu@hotmail.com

In the next issue

Upcoming articles :

- Thoughts on the ethics of a Feng Shui consultation by Steven Guth and Roseline Deleu
- Your own Feng Shui story
- Roseline Deleu upcoming book
- And many more new articles!

Remember to send your contribution, comments and classifieds before 1 June 2004.

I hope you enjoyed this first newsletter.

Thank You.

Roseline Deleu